

DUCT ACCESSORIES (Continued)

PRRIV

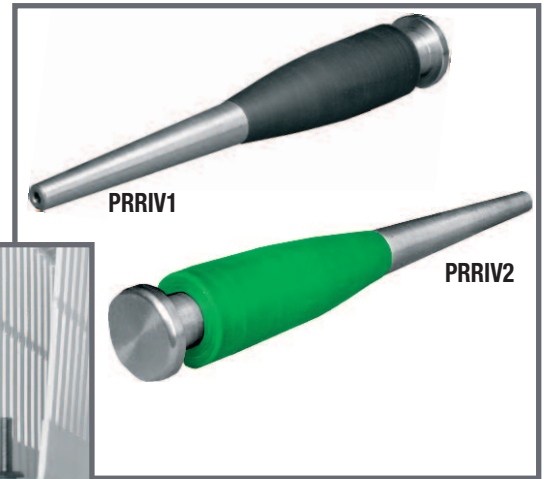
Part Number	Ø in.	Ø mm.	PCS Package
PRRIV1	0.25	6.5	1000 (5x200)
PRRIV2	0.18	4.5	1000 (5x200)

PLEASE CALL FOR PRODUCT AVAILABILITY

Riveting tool.

For the fast installation of the RIV1 and RIV2 rivets.

PRRIV1 = Riveting tool RIV1
 PRRIV2 = RIV2 adapter



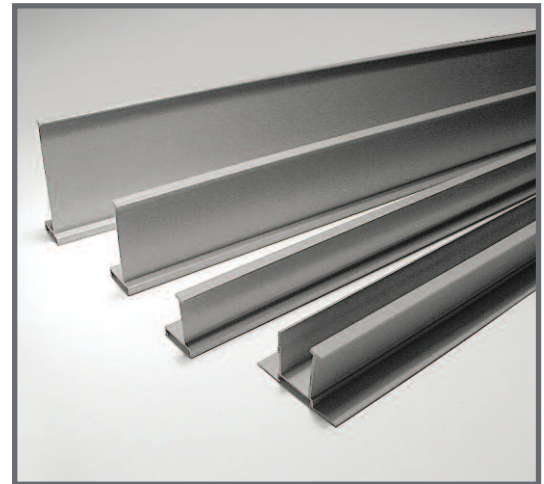
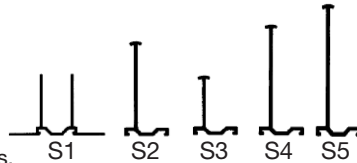
S()C

Part Number	H		PCS Package
	inch.	mm.	
S1C (2 separators)	1.57	40	30
S2C	2,36	60	50
S3C	1.57	40	60
S4C	3.15	80	32
S5C	3.94	100	32

PLEASE CALL FOR PRODUCT AVAILABILITY

Cable separator.

For separating the cables housed inside the ducting. Snap on the built-in rail of the duct. Several separation schemes can be obtained using different separators.

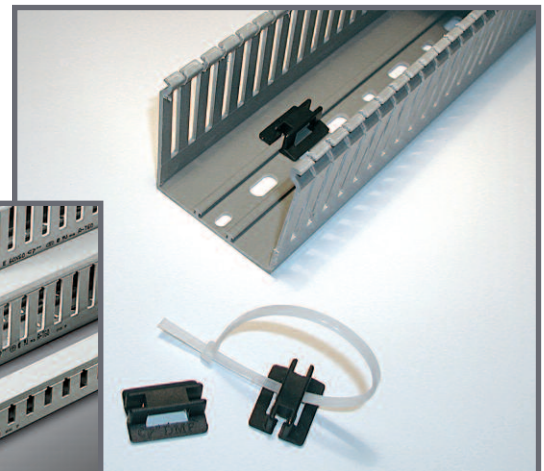
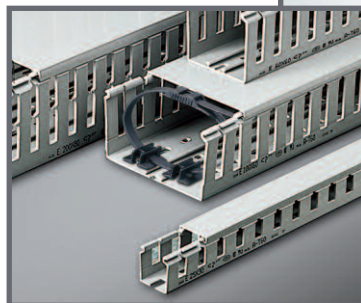


DMF

Part Number	CP Type	PCS Package
DMF	DMF	100 (2x50)

PLEASE CALL FOR PRODUCT AVAILABILITY

Cable tie holder which can be attached to all ducts fitted with a base rail.
 Material: Nylon



D