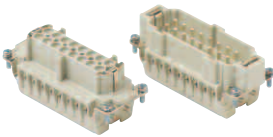




HEAVY DUTY MULTIPOLE CONNECTORS

Inserts

Series E **16 poles + ⊕ 16A max - 600V**

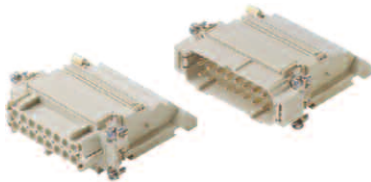


Part #	Screw Terminal with wire protection
E16RS	female inserts
E16PS	male inserts

Part #	Cage Clamp
E16RG	female inserts
E16PG	male inserts

Wire conductor range: 20 ÷ 14 AWG

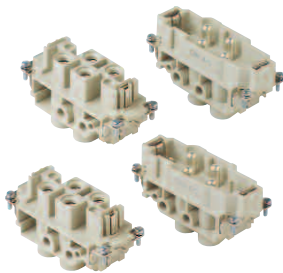
Series E-TB **16 poles + ⊕ 16A max - 600V**



Part #	Terminal Block Inserts Screw Terminal Connection
E16RS-TBL	female inserts with female contacts (left mounting)
E16RS-TBR	female inserts with female contacts (right mounting)
E16PS-TBL	male inserts with male contacts (left mounting)
E16PS-TBR	male inserts with male contacts (right mounting)

Wire conductor range: 18 ÷ 14 AWG

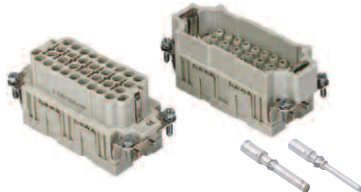
Series MP **4 poles + ⊕ 80A max - 600V** **4 + 2 poles + ⊕ 80A max - 600V + 16A max - 600V**



Part #	Screw Terminal
MP4/0RS	female inserts
MP4/0PS	male inserts
MP4/2RS	female inserts
MP4/2PS	male inserts

Wire conductor range: 80A/12 ÷ 6 AWG / 16A/18 ÷ 14 AWG

Series EQ **32 poles + ⊕ 16A max - 600V**

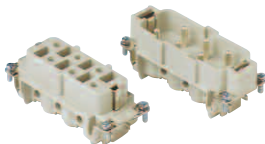


Part #	Inserts, Crimp Connections
EQ32RC	female inserts for female contacts
EQ32PC	male inserts for male contacts

16A Crimp Contacts must be ordered separately, see page B-28

Wire conductor range: 20 ÷ 12 AWG

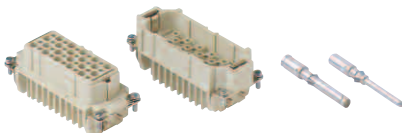
Series S **6 poles + ⊕ 35A max - 600V**



Part #	Screw Terminal
S06RS	female inserts
S06PS	male inserts

Wire conductor range: 16 ÷ 10 AWG

Series D **40 poles + ⊕ 10A max - 600V**



Part #	Crimp Terminal
D40RC	female inserts
D40PC	male inserts

Wire conductor range: 22 ÷ 14 AWG

10A Crimp Contacts must be ordered separately, see page B-28

All inserts listed above fit into bases on page B-18 and hoods on page B-19



HEAVY DUTY MULTIPOLE CONNECTORS

Crimp Contacts

B

10A Crimp Contact



16A Crimp Contact



40A Crimp Contact



10A Crimp Contact

Part #	Female Crimp Contacts
S22	0.14 ÷ 0.37 mm ² , AWG 26 ÷ 22
S20	0.5 mm ² , AWG 20
S18A	0.75 mm ² , AWG 18
S18B	1 mm ² , AWG 18
S16	1.5 mm ² , AWG 16
S14	2.5 mm ² , AWG 14

Part #	Male Crimp Contacts
P22	0.14 ÷ 0.37 mm ² , AWG 26 ÷ 22
P20	0.5 mm ² , AWG 20
P18A	0.75 mm ² , AWG 18
P18B	1 mm ² , AWG 18
P16	1.5 mm ² , AWG 16
P14	2.5 mm ² , AWG 14

Use Crimp Tool "CCPZ MIL" see page B-27

40A Crimp Contact

Part #	Female Crimp Contacts
SS16	1.5 mm ² , AWG 16
SS14	2.5 mm ² , AWG 14
SS12	4 mm ² , AWG 12
SS10	6 mm ² , AWG 10

Part #	Male Crimp Contacts
SP16	1.5 mm ² , AWG 16
SP14	2.5 mm ² , AWG 14
SP12	4 mm ² , AWG 12
SP10	6 mm ² , AWG 10

Use Crimp Tool "CXPZ D" see page B-27

16A Crimp Contact

Part #	Female Crimp Contacts
ES22	0.14 ÷ 0.37 mm ² , AWG 26 ÷ 22
ES20	0.5 mm ² , AWG 20
ES18A	0.75 mm ² , AWG 18
ES18B	1 mm ² , AWG 18
ES16	1.5 mm ² , AWG 16
ES14	2.5 mm ² , AWG 14
ES12	4 mm ² , AWG 12

Part #	Male Crimp Contacts
EP22	0.14 ÷ 0.37 mm ² , AWG 26 ÷ 22
EP20	0.5 mm ² , AWG 20
EP18A	0.75 mm ² , AWG 18
EP18B	1 mm ² , AWG 18
EP16	1.5 mm ² , AWG 16
EP14	2.5 mm ² , AWG 14
EP12	4 mm ² , AWG 12

Use Crimp Tool "CCPZ MIL" see page B-27

HOW TO CONVERT HOODS & BASES FROM PG TO NPT

Change the last number in the part number as follows:

Thread size	Pg to NPT	Metric to NPT	Thread size
Pg 11 to 3/8" NPT	2 to 9	16 to 9	M16 - 3/8"
Pg 11 to 1/2" NPT	2 to 10	16 to 10	M16 - 1/2"
Pg 13.5 to 1/2" NPT	3 to 10	20 to 10	M20 - 1/2"
Pg 16 to 1/2" NPT	4 to 10	25 to 10	M25 - 1/2"
Pg 21 to 3/4" NPT	5 to 11	25 to 11	M25 - 3/4"
Pg 29 to 1" NPT	6 to 12	32 to 11	M32 - 3/4"
Pg 29 to 1 1/4" NPT	6 to 13	32 to 12	M32 - 1"
Pg 36 to 1 1/4" NPT	7 to 13	32 to 13	M32 - 1 1/4"
Pg 36 to 1 1/2" NPT	7 to 14	40 to 12	M40 - 1"
Pg 42 to 1 1/2" NPT	8 to 14	40 to 13	M40 - 1 1/4"
		50 to 14	M50 - 1 1/2"

Examples:

ES1L06S4 (Pg 16) → ES1L06S10 (1/2" NPT)

ETTP16D5 (Pg 21) → ETTP16D11 (3/4" NPT)